

MSCA Postdoctoral Fellowships (PF) 2022

Novedades y aspectos generales

María Herrero, NCP MSCA y Técnico de Internacionalización CSIC

Área de Programas Internacionales (VRI)

16 de junio de 2022

Content

- ☐ MSCA Support in Spain
- ☐ MSCA General Aspects and features
- ☐ The MSCA Actions in Horizon Europe
- ☐ Postdoctoral Fellowships Call 2022 details: objectives, eligibility conditions, financial contribution and award criteria
- ☐ Some data
- ☐ General tips for proposal writing and useful links

Puntos Nacionales de Contacto MSCA España



Cristina Gómez
Representante
y NCP
FECYT



Jesús Rojo
NCP
Fundación
Madri+d



María Herrero
NCP
Agencia Estatal
CSIC



Xavier Eekhout
NCP
FECYT

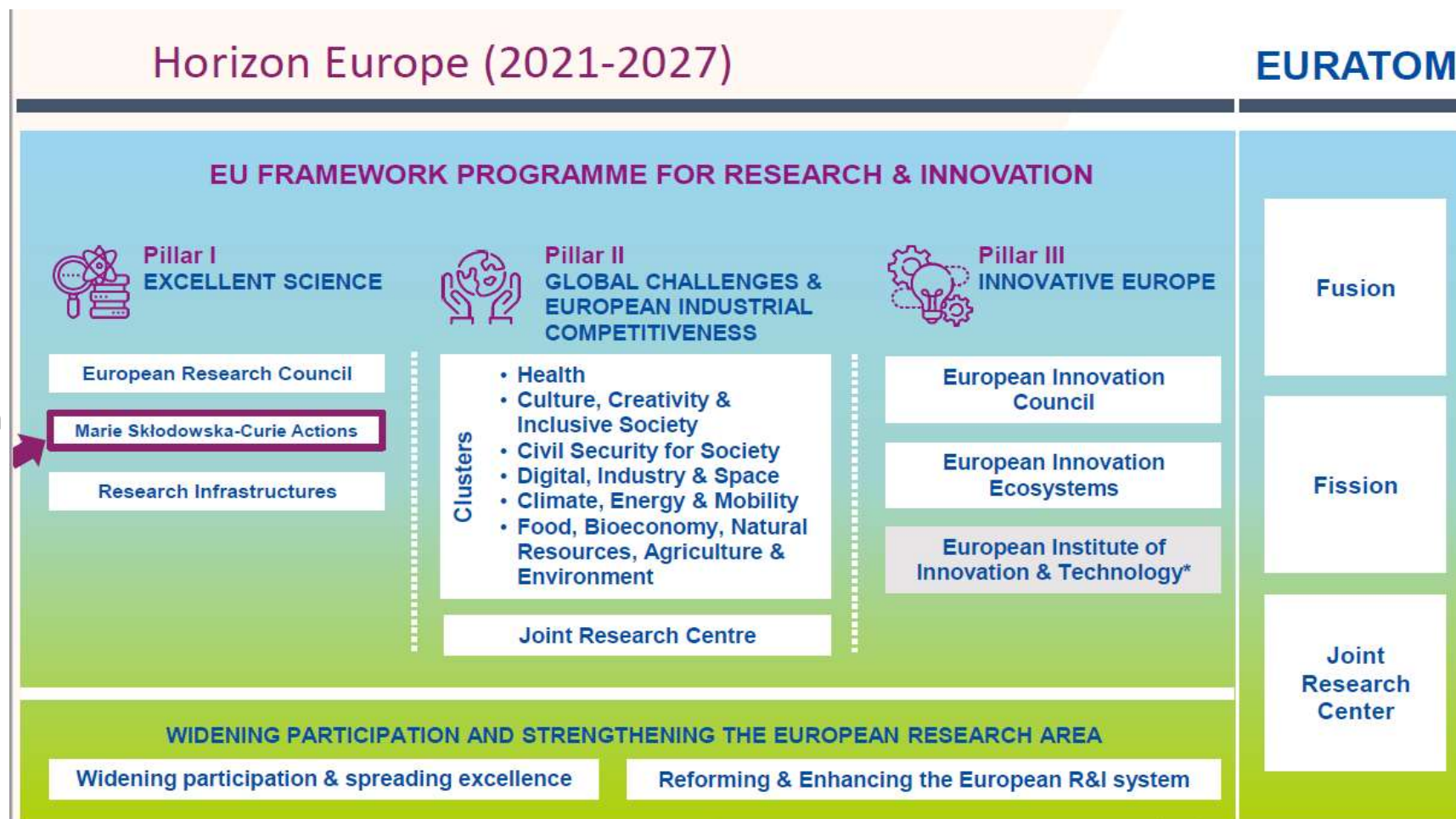
msca@fecyt.es

Apoyo NCPs MSCA: Horizonte Europa



- Sesiones principalmente **on-line**, aunque poco a poco retomando la **presencialidad**
- Revisión propuestas:
 - ✓ Doctoral Networks
 - ✓ Staff Exchanges
 - ✓ COFUND
- Actividades de apoyo a **nivel de gestión** a proyectos COFUND concedidos

General Aspects MSCA



General Aspects MSCA



- Gender friendly and inclusive
- Focus not only on dissemination, but on public outreach
- Synergies with European Policies, such as Green Deal, bridging ERA and EEA

The MSCA Actions in Horizon Europe

Doctoral Networks

Doctoral programmes
in and outside
academia incl. joint &
industrial doctorates

Postdoctoral Fellowships

Support to excellent
postdoctoral
researchers

Staff Exchanges

Support for research
and innovation staff
exchanges

COFUND

Co-funding doctoral
and postdoctoral
programmes

MSCA and Citizens

Public outreach events
(European Researchers'
Night, Researchers at
School)

MSCA PF 2022: What is it?

Main objectives:

- **Foster excellence** through implementation of research project
- Enhance the **creative and innovation potential** of researchers holding a PhD (training on transferable skills & career development)
- Focus on **I3** (international, inter- sectoral, interdisciplinary) mobility
- Improve **employability** and **career prospects** within academia and beyond
- Bridges and **exposure to the non- academic sector**
- **Career development** of researchers

WHO?

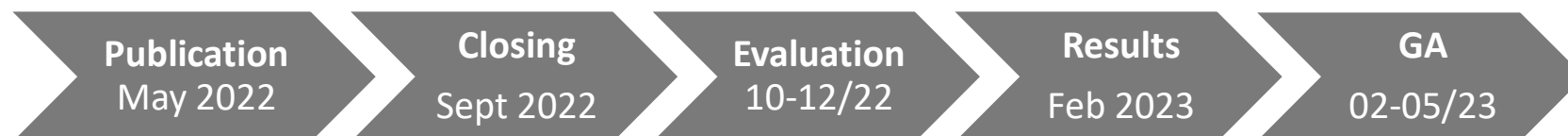
An individual postdoctoral researcher and a host organisation

HOW?

An excellent research deployed to the scientific proposal

MSCA PF 2022: timeline

Call ID	Opens	Closes	Budget
TMA-MSCA-PF-2022	12/05/2022	14/09/2022	257 M€ (218.45 EF + 38.55 GF) + 1M€ Euratom



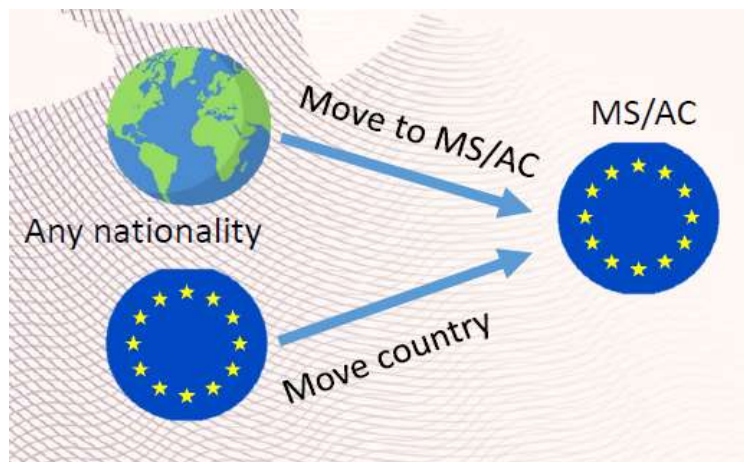
Prospective Start Date: March 2023 - September 2024

https://rea.ec.europa.eu/funding-and-grants/horizon-europe-marie-sklodowska-curie-actions/msca-postdoctoral-fellowships_en

Two types of MSCA Postdoctoral Fellowships

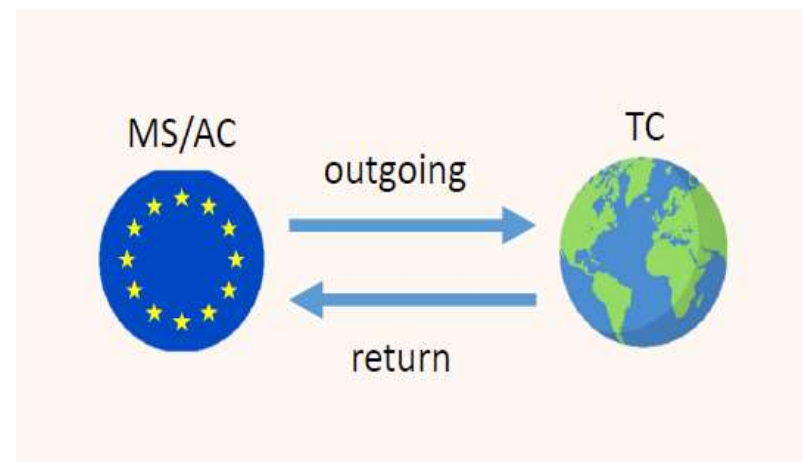
European Postdoctoral Fellowships

12 – 24 months



Global Postdoctoral Fellowships

12-24 months outgoing phase +
12 months return phase



MSCA PF 2022: European Fellowships

EUROPEAN FELLOWSHIPS

MS/AC



- For fellows coming to or moving within European countries.
- **Panels are discontinued**, new incentives apply
- **EURATOM** areas now included

- Open to all nationalities
- Mobility rule applies
- 12-24 months duration
- For EU nationals or long-term residents who wish to reintegrate, time outside of EU will not count towards scientific age
- Possibility to carry out **secondments worldwide**
- Possibility to have a **placement** at the **end of the fellowship (+ 6 months)**

MSCA PF 2022: Global Fellowships

GLOBAL FELLOWSHIPS

TC
MS/AC



- National or long term residents of EU MS/AC to do a **research in a Third Country**
- Transfer of knowledge, through a **Return Phase to Europe** is mandatory.

- Open to EU/AC nationals or long-term residents
- Mobility rule applies in **Third Country**
- 24-36 months duration
- Possibility to carry out **secondments** in the **outgoing phase**
- Possibility to have a **placement** at the **end of the fellowship (+ 6 months)**

ERA Fellowships 2022

The ERA Fellowships are open for applicants of **any nationality** with a **beneficiary from a Widening Country**.

Budget: €8M

How does it work?

- Global Fellowships are **not eligible**
- Applicants need to **opt in at application stage** (there will be no other opportunity later on)
- A number of excellent applications (i.e. on the reserve list) that cannot be funded by MSCA due to budget constraints will be offered an ERA Fellowship

Which countries are concerned?

Member States: Bulgaria, Croatia, Cyprus, Czech Republic, Estonia, Hungary, Latvia, Lithuania, Luxembourg, Malta, Poland, Portugal, Romania, Slovakia, Slovenia and outermost regions - Guadeloupe, French Guiana, Réunion, Martinique, Mayotte and Saint-Martin (France), and the Canary Islands (Spain).

Associated Countries: Armenia, Bosnia and Herzegovina, North Macedonia, Georgia, Moldova, Montenegro, Serbia and Turkey and in process of association: Albania, Faroe Islands, Tunisia, Ukraine

MSCA PF 2022 for Euratom fields of research

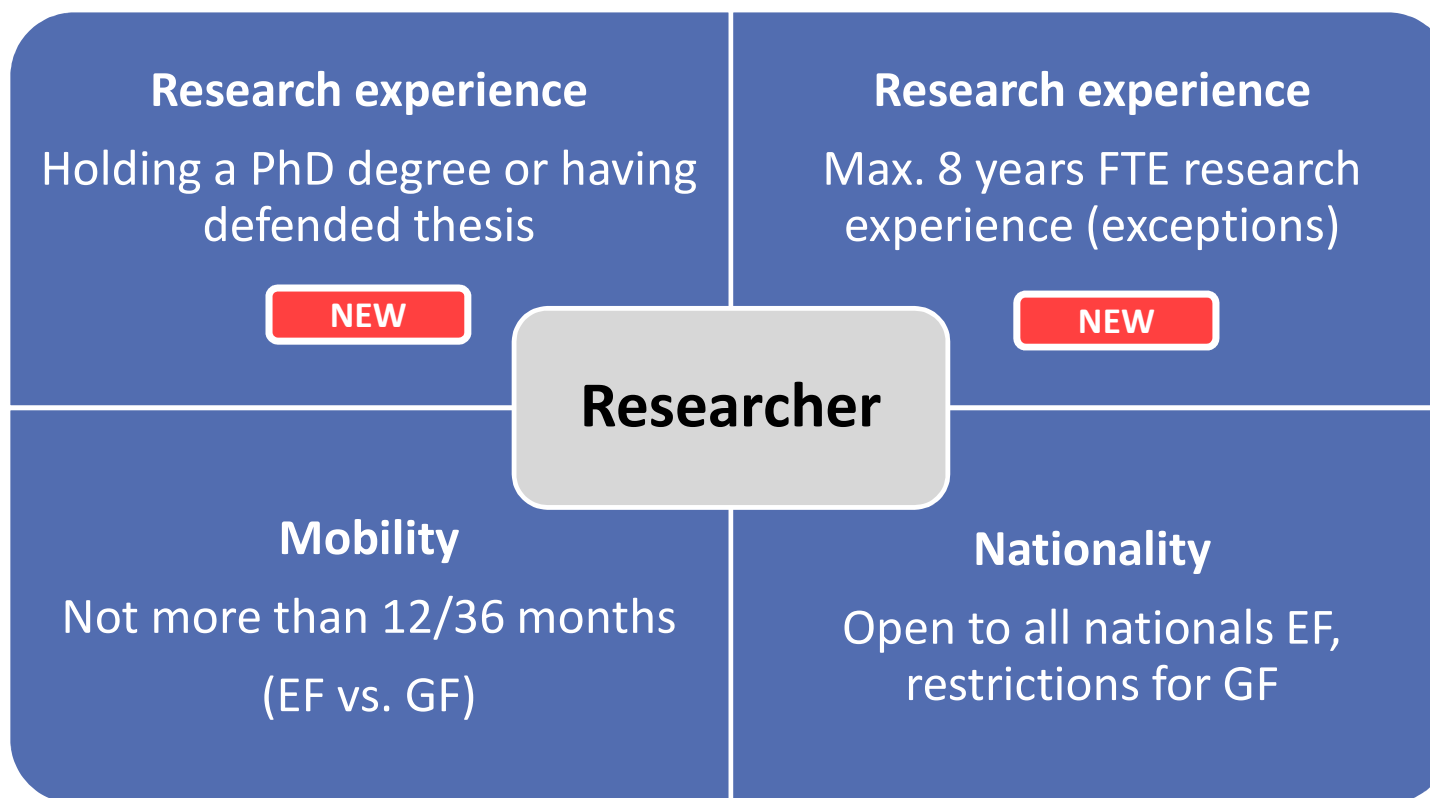
- Since 2021, MSCA is open to **nuclear research** falling under the scope of the **Euratom research& training programme**
- **Indicative budget : €1M** from Euratom programme annually
- Open for **both European and Global Fellowships**
- **Opt in at application stage**

Specific eligibility conditions:

- The following participants must be from an **EU Member State or Euratom Associated Country***:
 - ✓ Individual **researcher**
 - ✓ The **beneficiary**
 - ✓ The **non-academic placement** host (if any)

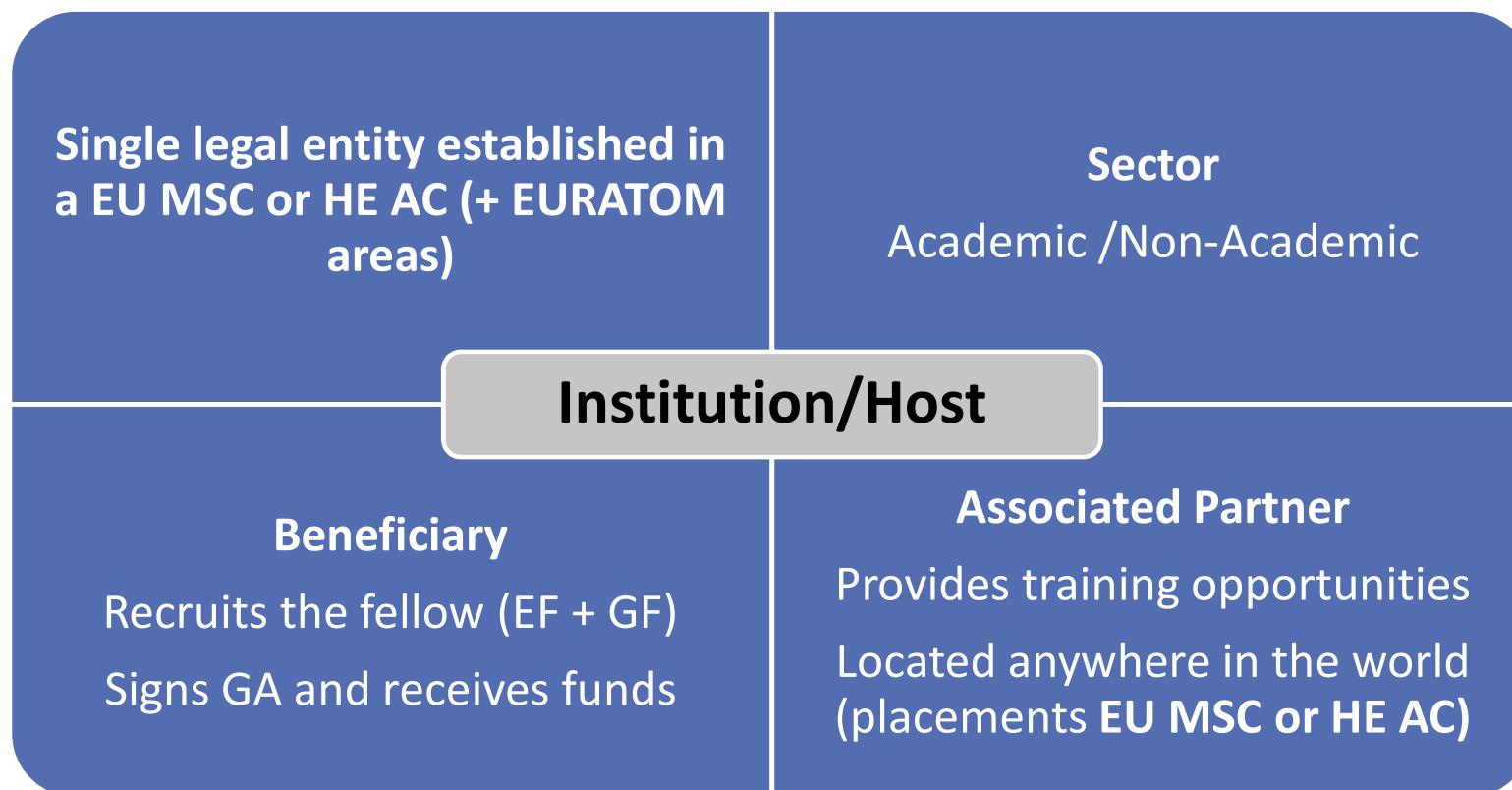
* based on association agreements status as of February 2022, only Ukraine and the United Kingdom are expected to become associated

MSCA PF 2022: who can apply



Eligibility aspects measured at **call deadline**

MSCA PF 2022: who can apply



Letters of commitment will apply for **Placements (EF)** and **outgoing phases (GF)**

MSCA PF 2022: Eligibility conditions: Individual researchers

Nationality of researcher

- **European Fellowships:** any nationality
- **Global Fellowships:** nationals or long-term residents of MS or HE AC (see definition of long-term residents in [MSCA-PF GfA](#))

The researchers must also:

- Be in **possession of PhD** at the call deadline
- Have **up to 8 years research experience maximum** after PhD (with exceptions = career breaks, work outside research, research outside Europe for reintegrating researchers)
- Not have resided /carried out their main activity in the country of the beneficiary (for European Fellowships) or TC associated partner **only** (for Global Fellowships) for more than 12 months in the 36 months before call deadline (**mobility rule**)
- An individual researcher can only **submit one proposal**
- The **European Research Executive Agency (REA)** makes the final decision on whether the application meets the eligibility conditions

MSCA PF 2022: Eligibility conditions: 8-years research experience

Exclude time-spent for the following:

- Maternity leave
- Paternity leave
- Long-term sick-leave
- Career break
- Time spent not working in research
- Compulsory national service
- For nationals or long-term residents of MS or AC 1) reintegrating from a third country and 2) applying for a European Fellowship **only**, the time spent doing research in third country can be excluded

All exceptions need to be documented.

How to calculate the 8-years research experience?

- REA Guidelines (MSCA-PF 2022): https://rea.ec.europa.eu/system/files/2022-05/Guidelines_8%20year%20rule_2022.pdf
- REA Self-assessment tool (MSCA-PF 2022): https://rea.ec.europa.eu/funding-and-grants/horizon-europe-marie-sklodowska-curie-actions/horizon-europe-msca-how-apply_en#ecl-inpage-292

MSCA PF 2022: Eligibility conditions: Mobility rule example

In case of **remote work** performed from country A for an employer located in country B, both countries are taken into account in the eligibility check.

Example [\(FAQ Funding & Tenders Portal\)](#)

A researcher started a **contract with a Belgian university** in January 2020. However, the researcher has **not been able to move to Belgium** until March 2021 and worked for the Belgian university **remotely from France**.

As per the mobility rule in MSCA-PF, the researcher will be **ineligible for institutions located in both countries (Belgium and France)**.

MSCA PF 2022: Eligibility conditions

Specific eligibility conditions apply for both the **individual researchers** and **participating organisations**.

One Beneficiary (for European & Global Fellowships)

- Legal entity in an **EU Member State or HE Associated Country**
- Signs the **grant agreement**
- **Recruits** the researcher
- Main host of the researcher for European Fellowships
- Host of the return phase for Global Fellowships

+ One Associated Partner for Global Fellowships

- For Global Fellowships, it is the **host organisation in the third country** (outgoing phase)
- It must be a **legal entity** outside an EU Member States and HE Associated Country
- It must submit a **letter of commitment**

MSCA PF 2022: Eligibility conditions: Which countries?

EU Member States (MS)

HE Associated Countries (AC): all countries associated to the Horizon Europe programme through an association agreement.

- **Agreements in place:** Armenia, Bosnia and Herzegovina, Georgia, Iceland, Israel, Kosovo, Moldova, Montenegro, North Macedonia, Norway, Serbia, Turkey
- **In process of association** (transitional arrangement): Albania, Faroe Islands, Morocco, Tunisia, Ukraine, United Kingdom*

Third countries (TC): any other country

* Based on [HE association agreements status](#) as of April 2022

MSCA PF 2022: general concepts for institutions

	Beneficiaries	Associated Partners
Academic/Non-academic	✓	✓
Signatories of the Grant Agreement	✓	✗
Recruitment of researchers	✓	✗
Training and/or hosting of seconded researchers	✓	✓
Participation in Supervisory Board	✓	✓
Directly claim costs	✓	✗

Academic sector

- ✓ public or private higher education establishments
- ✓ public or private non-profit research organisations
- ✓ International European Research Organisations



Non-academic sector

- ✓ any socio-economic actor not included in the academic sector



MSCA PF 2022: New eligibility condition: Resubmissions

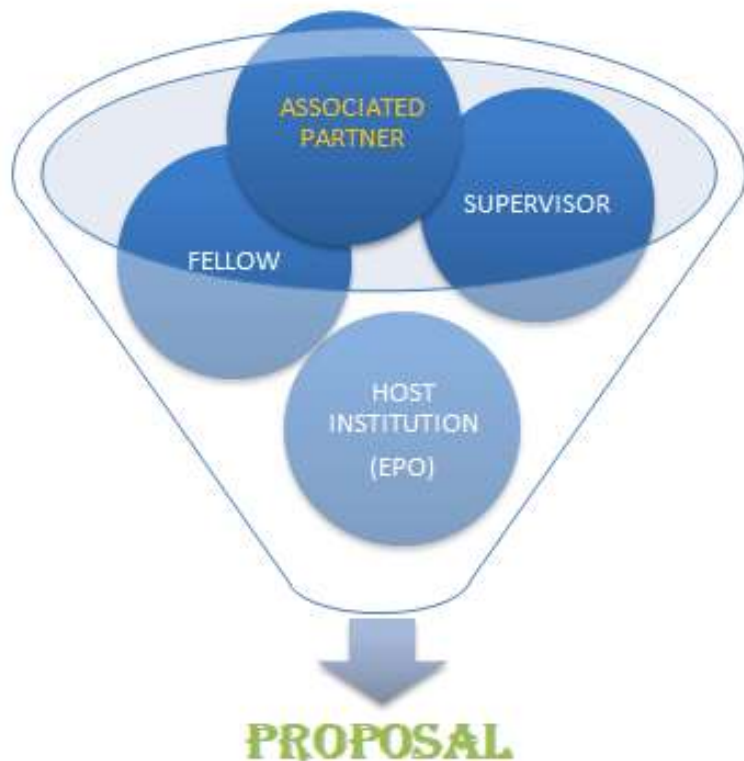
- ❑ As of 2021, new eligibility condition related to resubmissions.
- ❑ From 2022, resubmissions will **not be allowed for proposals that have scored less than 70%** in the previous call

What is a resubmission?

Proposals involving :

- ✓ **Same individual researcher**
- ✓ **With the same recruiting organisation (beneficiary)**
- ✓ **And for Global Postdoctoral Fellowships, the associated partner** hosting the outgoing phase in the third country

MSCA PF 2022: how does it work?



- Individual project supported by Host Institution
- Ensure the supervisor and European Project Office (EPO) participation in the process

MSCA PF 2022: MSCA PF project

What is a project?

- **Personalised and original** research project written by the researcher
- Includes a concrete plan of **training-through-research** and clear **career development objectives**
- Implemented **with the host organisation(s)** (at their premises, unless on short visits, secondments or placements)
- Under the **direct supervision** of one or several supervisor(s)

Flexibility arrangements

- **Part-time** is possible
- **Flexible project start date**: up to 24m after call closure

Other possible collaboration & mobility during the project

- Short visits and fieldwork
- Secondments
- Non-academic placement

MSCA PF 2022: Typical training activities

- **Training-through-research:** individual personalised action
- **Hands-on training activities** for developing scientific (new techniques, instruments) and transferable skills (proposal preparation to request funding, IPR management , task coordination, supervising & monitoring, exploitation of research results)
- Intersectoral or interdisciplinary transfer of knowledge (e.g. through **secondments and placement**)
- Organisation of **scientific/training/dissemination events**
- Communication,**outreach activities and horizontal skills**
- Training dedicated to gender issues
- *Etc...*

MSCA PF 2022: Optional features: Secondments

Fellows can undertake secondments within the duration of the fellowship:

- **Worldwide** for up to 1/3 of the fellowship duration
- It can be done in a **single period** or be divided into **shorter mobility periods**
- Can be done in any sector, in **academic and/or non-academic sector** organisations
- The secondment(s) should be in **line with the project objectives**, adding significant **value and impact to the fellowship**
- For **Global Fellowships**, secondments can **only be done during the outgoing phase** in the third country. No secondment can take place during the mandatory return phase in MS or AC

MSCA PF 2022: Optional features: Non-academic placements

Novelty since 2021: Placement of **up to 6 months** in a **non-academic European organisation** at the end of the fellowship

Objectives:

- Expanding **career opportunities** for researchers and moves between sectors and organisations
- Stimulate **innovation and knowledge transfer**

How it works?

- At the end of the fellowship, an **additional period** is supported for the placement
- **Integral part of the proposal:** added-value for the project and for the career development of the researcher
- The placement host must be a **non-academic organization in EU MS or AC**
- The placement host must provide a **letter of commitment** at the application stage

If the non-academic placement is non-eligible (academic organisation or lack of letter of commitment), the proposal will be evaluated without taking into consideration this part

MSCA PF 2022: secondments and placements

	SECONDMENT		NON-ACADEMIC PLACEMENT
Maximum Duration	EF: Up to 1/3 of the normal project duration	GF: Up to 1/3 of the duration of the outgoing phase	Up to 6 months duration
Timing	EF: At any time during the duration of the standard project duration	GF: <ul style="list-style-type: none">up to three months possible at the start of the outgoing phase, to be included within the 1/3 maximum duration.not allowed during the mandatory 12 month return phase	Additional period after the standard duration of the fellowship
	Can be divided in several smaller periods		
Mobility	Any country worldwide		EU Member State or Horizon Europe Associated Country
Sector	Any sector		Non-academic sector only
Encoding in Part A	Not encoded as a participating organisation (associated partner). Tick the box and indicate the number of months. Section 5		Encoded as a participating organisation (associated partner).
Description in part B1	Yes. Secondments should be described in part B1 and the evaluators will assess their relevance and quality in the respective criterion.		Yes. Non-academic placements should be described in part B1 and the evaluators will assess their relevance and quality in the respective criterion.
Supporting Doc in part B2	None		Yes. A letter of commitment is required.

Not obligatory, must be well defined in the project // Supervisors are needed in both cases

MSCA PF 2022: Unit Costs

Contributions for recruited researchers Per person-month					Institutional unit contributions Per person-month	
Living allowance	Mobility allowance	Family allowance (if applicable)	Long-term leave allowance (if applicable)	Special needs allowance (if applicable)	Research, training and networking contribution	Management and indirect contribution
EUR 5 080	EUR 600	EUR 660	EUR 5 680 x % covered by the beneficiary	Requested unit x (1/number of months)	EUR 1 000	EUR 650

Budget pre - calculated by EC, based on unit costs: 100% financing

MSCA PF 2022: Unit Costs

MSCA	Researcher Unit Cost (person/month)			Institutional Unit Cost (P/M)	
	Living Allowance*	Mobility Allowance	Family Allowance	Research, training and networking	Management and overheads
PF	5.080	600	660	1.000	650
PF ES	4.638,04	600	660	1.000	650
PF 24 months ES	111.312,96	14.400	15.840	24.000	15.600
TOTAL PF 2 years	181.152,96 €				

RESEARCHER UNIT COST

Living Allowance:

- CCC: country correction factor applies (host country) **91,3**
- Gross EU contribution living allowance (- cuota patronal, - taxes, - S.S...) before taxes!

INSTITUCIONAL UNIT COST

Research, training and networking costs:

Purchase of material, organisation and travel to events, payment of conferences fees, etc.

Management and overheads:

Indirect costs for institutions

MSCA PF 2022: Allowances Novelties

- **Familly Allowance** – increases from 500€ to 660€ - paid during the project life-time.
- **Long-term allowance** – personnel cost incurred by the beneficiaries in case of researchers' leave, including maternity, paternity, parental, sick or special leave – during the project life-time.
- **Special needs allowance** – additional costs for the acquisition of special needs items ad services for researchers with disabilities (up to 60.000 € per researcher) – during the project life-time.

MSCA PF 2022: main evolution aspects

Unique mobility rule

Eligibility of researcher

Bottom up
+
Euratom

European and Global
Fellowships

World wide
secondments up to
1/3 of the duration

Additional placement
to the EU/AC non-
academic organisation
for 6 months

Increased budget
categories

Evaluation criterium

Resubmission
restriction

MSCA PF 2022: Award criteria

EXCELLENCE	IMPACT	QUALITY AND EFFICIENCY OF THE IMPLEMENTATION
Quality and pertinence of the project’s research and innovation objectives (and the extent to which they are ambitious, and go beyond the state of the art)	Credibility of the measures to enhance the career perspectives and employability of the researcher and contribution to his/her skills development	Quality and effectiveness of the work plan , assessment of risks and appropriateness of the effort assigned to work packages
Soundness of the proposed methodology (including interdisciplinary approaches, consideration of the gender dimension and other diversity aspects if relevant for the research project, and the quality of open science practices)	Suitability and quality of the measures to maximise expected outcomes and impacts , as set out in the dissemination and exploitation plan, including communication activities	Quality and capacity of the host institutions and participating organisations , including hosting arrangements
Quality of the supervision, training and of the two-way transfer of knowledge between the researcher and the host	The magnitude and importance of the project’s contribution to the expected scientific, societal and economic impacts	
Quality and appropriateness of the researcher’s professional experience , competences and skills		
50%	30%	20%

MSCA PF 2022: The Evaluation

- ❑ Ca **9,000-10,000 proposals** received per year
- ❑ **MSCA-PF success rate**: $\approx 14\%$
- ❑ **4,500 experts** from around the world, working remotely
- ❑ **8 Scientific Panels** (LIF, PHY, MAT, ENG, CHE, ENV, SOC, ECO)
- ❑ **Time-to-Grant**: 5m + 3m (from the call closure date)

The results for the 2022 call will **not be available before mid-February 2023**

MSCA Seal of Excellence

- The Seal of Excellence is awarded to **applications achieving a score of 85% or above** not retained for funding
- Quality label, helping recipients to attract other potential funders
- **Specific support schemes** exist for MSCA Seal of Excellence holders. You will find the complete list [here](#)
- The certificate will be **sent out automatically**

Commitments for successful applications (non-exhaustive)

- **Mobility:** the researcher must **move to the country of the beneficiary**
- **Working commitment:** in principle full-time, but requests for part-time work are possible and must be approved by REA
- **Working conditions** for fellows in accordance with the principles set out in the *European Charter for Researchers and the Code of Conduct for the Recruitment of Researchers*
- Address the recommendations in the ***MSCA Guidelines on Supervision*** on a **best-effort basis**
- Address the principles of the ***MSCA Green Charter***, on a **best-effort basis**
- Ensure **open access** to research outcomes, including FAIR data management
- **Key deliverables** to be submitted at different stages of the project (see [MSCA Work Programme 2021-2022](#), p.93-94)

Two Novelties under Horizon Europe

The ***MSCA Guidelines on Supervision*** and the ***MSCA Green Charter*** are both new instruments to be implemented on a **best-effort basis**, by MSCA beneficiaries

MSCA Guidelines on Supervision

MSCA beneficiaries must ensure adequate supervision or mentoring and appropriate **career guidance** for the researchers.

The guidelines are a **reference and code of good practice** to ensure that researchers receive adequate supervision during their MSCA research project.

MSCA Green Charter

Code of good practice for individuals and institutions to promote the **sustainable implementation of research activities**.

At **final reporting stage**, all MSCA projects will be asked to report on the ways they have sought to **minimise the environmental impact** of their research activities and how they **applied the principles of the Green Charter**.

Statistics MSCA PF 2021

Cutt off MSCA PF 2021

	PF-EF			PF-GF	
PANEL	CUT-OFF	Nº FUNDED PROJECTS	PANEL	CUT-OFF	Nº FUNDED PROJECTS
CHE	92,8	148	CHE	92	11
ECO	92	17	ECO	83,8	2
ENG	92,8	143	ENG	95	11
ENV	93,6	123	ENV	95,8	19
LIF	94,4	230	LIF	95,8	19
MAT	92,4	23	MAT	92	2
PHY	92,2	119	PHY	94,2	11
SOC	93,6	222	SOC	92,8	56
		1025			131

Statistics MSCA PF 2021

Some conclusions

- **Panel with the highest number of retained proposals:** SOC
- SOC and LIF panels - almost half of all funded proposals (45.6%), followed by CHE and ENG (13%).
- **Differences across types of action:**
 - ✓ For **EF**, SOC and LIF - similar numbers in terms of funded proposals (19.2-19.8%)
 - ✓ For **GF**, SOC - the biggest ranking list (42.8%), followed by ENV and LIF, both 13%.
- Funded proposals including **NAPs**: 64 proposals (53 in EF, 11 in GF).
- **Top 5 countries for outgoing phase** of funded GF: US (79), CH (14), CA (13), AU (9), BR (2) –
different from IF-2020 (US, CA, AU, JP, NZ)
- **Most successful host countries** (ratio of funded/submitted proposals): SK (25%), DK (19.8%), AT (16.4%), DE (15.8%), NL (15.4%)
- **Top 5 nationalities of researchers** for funded proposals: Italy (161), Spain (123), India (78), China (68), Germany (64)

MSCA PF 2022: General tips for proposal writing

About the project :

- A PF proposal is **not a research proposal** as such, but a **proposal for training in research**
- **Don't be over-ambitious** –it is a common flaw that the work plan is not realistic
- Be precise – less is sometimes more; structure the proposal well
- Try to have the best match researcher/supervisor/Host Institution

About the researchers' CV:

- CV don't have to be perfect, but the **training should mend any shortcomings**
- The **employability** after the fellowship is key

MSCA PF 2022: General tips for proposal writing

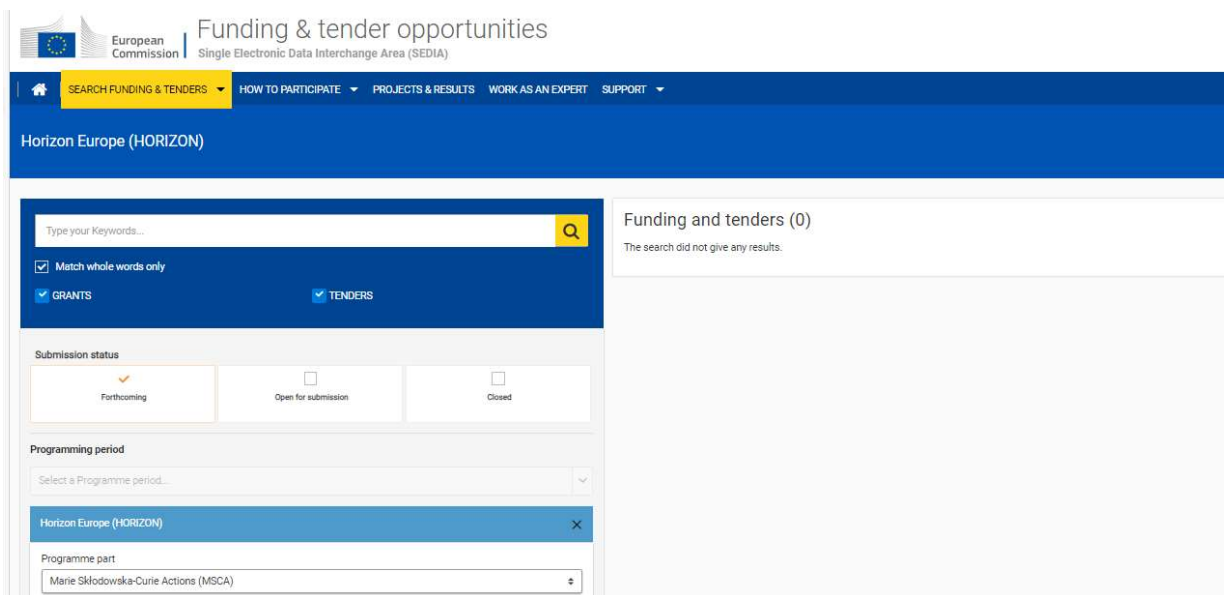
General Approach:

- It is an individual project but a collaborative work
- **Involve the HOST institution:** European Projects Offices / Transfer of Technology Offices/ HR Departments, other colleagues...
- National Contact Points...
- Get familiar with the Funding and Tenders 'Portal, upload a version, you will be able to rewrite it

About the evaluation:

- The **weighting of criteria** is 50% -30% -20%. You need to perform at close to 100% on each
- **Follow the template** –the evaluators need to find all key points
- The reviewers may not be specialists in the field
- **“Una imagen vale más que mil palabras”**: use visuals to provide global information at a glance

MSCA PF 2022: Useful links



European Commission | Funding & tender opportunities
Single Electronic Data Interchange Area (SEDIA)

SEARCH FUNDING & TENDERS | HOW TO PARTICIPATE | PROJECTS & RESULTS | WORK AS AN EXPERT | SUPPORT

Horizon Europe (HORIZON)

Type your Keywords...

☒ Match whole words only

☒ GRANTS ☒ TENDERS

Submission status

☒ Forthcoming ☐ Open for submission ☐ Closed

Programming period

Select a Programme period...

Horizon Europe (HORIZON)

Programme part

Marie Skłodowska-Curie Actions (MSCA)

Funding and tenders (0)
The search did not give any results.

[Search Funding & Tenders \(europea.eu\)](https://europea.eu)



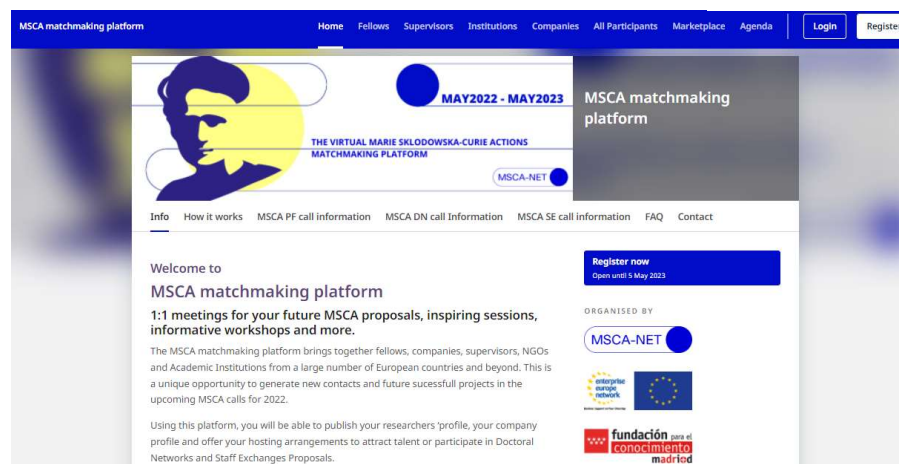
MSCA PF 2022: Useful links

- Marie Skłodowska-Curie Actions Website https://ec.europa.eu/research/mariecurieactions/node_en
- Euraxess (PhD and postdoctoral vacancies, more information) <https://euraxess.ec.europa.eu/>
- Enterprise Europe Networks (for non academic partners) <https://een.ec.europa.eu/>
- **MSCA-NET project** www.msca-net.eu
- **MSCA matchmaking platform** <https://msca.b2match.io/>
- National Contact Points <https://ec.europa.eu/info/funding-tenders/opportunities/portal/screen/support/ncp>
- Research Enquiry Service https://ec.europa.eu/info/research-and-innovation/contact/research-enquiry-service-and-participant-validation_en
- European Charter and Code for Researchers <https://euraxess.ec.europa.eu/jobs/charter-code-researchers>
- **MSCA Guidelines on Supervision** <https://ec.europa.eu/research/mariecurieactions/about-msca/msca-guidelines-on-supervision>
- **MSCA Green Charter** <https://ec.europa.eu/research/mariecurieactions/green-charter>
- MCAA (Marie Curie Alumni association) <https://www.mariecuriealumni.eu>

MSCA matchmaking platform

The MSCA matchmaking platform brings together fellows, companies, supervisors, NGOs and Academic Institutions from a large number of European countries and beyond. This is a unique opportunity to generate new contacts and future successful projects in the upcoming MSCA calls for 2022.

Using this platform, you will be able to publish your researchers 'profile, your company profile and offer your hosting arrangements to attract talent or participate in Doctoral Networks and Staff Exchanges Proposals.



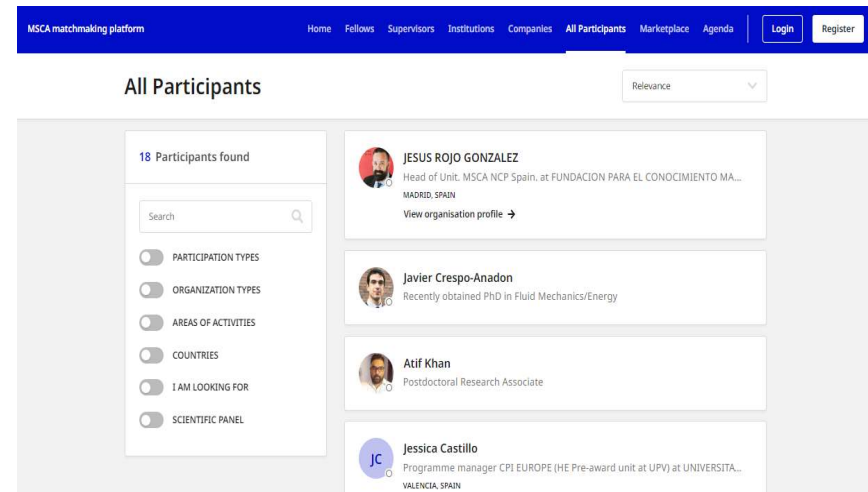
<https://msca.b2match.io/>

MSCA matchmaking platform



You will be able to connect with:

- Future Fellows for PF proposals
 - Supervisors
 - Academic Institutions
 - Companies
 - Other Organisations
- Book 1-1 meetings
 - The right place to find partners for MSCA proposals
 - Covers PF, DN and SE 2022
 - Special section with infodays and useful resources
 - Submit your profile!



<https://msca.b2match.io/>

Centralized documents: www.horizonteeuropa.es

Sesiones informativas y documentación de apoyo
Convocatoria Proyectos
Posdoctorales MSCA 2022
| Horizonte Europa

 [@horizonteeuropa](https://twitter.com/horizonteeuropa)

Sesiones informativas y documentación de apoyo Convocatoria Proyectos Posdoctorales MSCA PF 2022

224 Shares  [Twitter](#)  [Share](#)  [Share](#)  [Share](#)

21 de Abril de 2022

Acciones Marie Skłodowska-Curie (MSCA)

La Convocatoria Proyectos Posdoctorales (MSCA PF 2022) abrirá el próximo 12/05/2022 con fecha de cierre 14/09/2022 y cuenta con un presupuesto de 257 millones de euros.

La convocatoria MSCA PF 2022 está abierta a personal investigador de cualquier nacionalidad que cuente con un máximo de 8 años de experiencia investigadora y que desee adquirir nuevas habilidades a través de la formación avanzada y la movilidad internacional, interdisciplinar e intersectorial.

Las actividades de difusión y promoción están dirigidas al personal investigador y al personal de supervisión/gestión encargado de apoyar las solicitudes en las instituciones españolas.

Las sesiones informativas son las siguientes:

Marie Skłodowska-Curie Actions
Convocatoria MSCA PF 2022- Proyectos Posdoctorales

Seminarios de difusión y apoyo a preparación propuestas

- 20 de mayo: seminario nacional: aspectos generales y novedades
- 25 de mayo: seminario autonómico Andalucía
- 26 de mayo: seminario autonómico Comunidad Valenciana (presencial)
- 6 de junio: seminario nacional: envío de la propuesta y aspectos financieros
- 8 de junio: seminario autonómico País Vasco
- 9 de junio: seminario autonómico Aragón
- 16 de junio: seminario autonómico Cataluña
- 20 de junio: seminario nacional: evaluación y aspectos prácticos
- 21 de junio: seminario autonómico Murcia (presencial)
- 27 de junio: Café con tu NCP: sesión de dudas para personal de gestión



La documentación se irá actualizando a medida que tengan lugar las diferentes sesiones.

Seminario nacional online 20/05/2022:

En esta sesión se ofrecerá información sobre las novedades, reglas de participación, aspectos de elegibilidad y demás aspectos generales de esta convocatoria MSCA en Horizonte Europa. Los Puntos Nacionales de Contacto de MSCA serán los encargados de impartir este seminario y se contará igualmente con el testimonio de personal investigador beneficiario de proyectos MSCA.

Inscripción: <https://bit.ly/3dxtsP6>

Nothing in life is to be feared, it is
only to be understood. Now is the
time to understand more, so that
we may fear less



¡Gracias por vuestra atención!

msca@fecyt.es

 [@MariaHD81](https://twitter.com/MariaHD81)